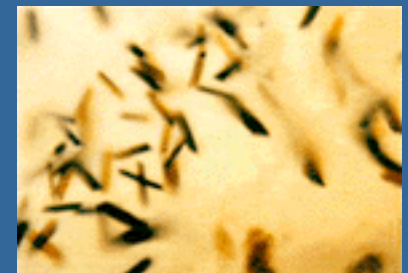
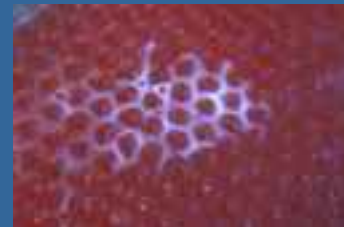
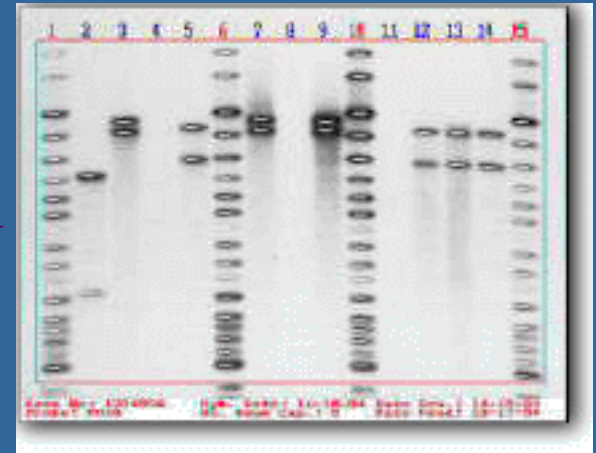


TYPES OF PHYSICAL EVIDENCE

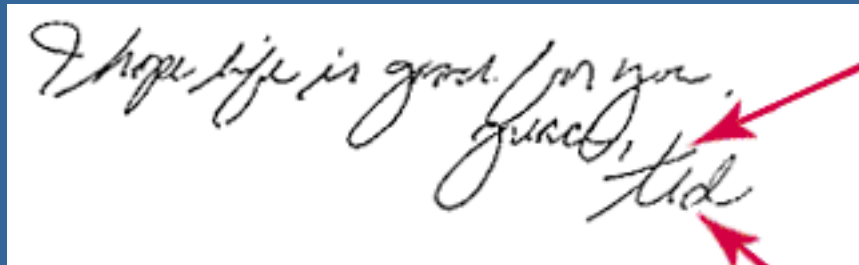
BLOOD, SEMEN, SALIVA

- LIQUID OR DRY
- ANIMAL OR HUMAN
- CAN BE FOUND ON
 - VICTIM
 - SUSPECT
 - CLOTHING
 - OBJECTS



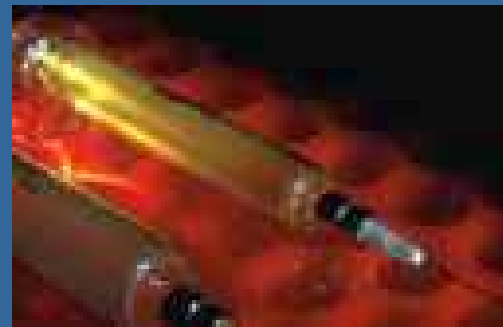
DOCUMENTS

- HANDWRITTEN OR TYPED
- COMPUTER HARD DRIVES
- REMNANTS OF WRITING
- TYPE AND SOURCE OF
 - PAPER
 - INK



DRUGS

- ILLEGAL OR LEGAL
- POSSESSION OR INTENT TO DISTRIBUTE
- USAGE



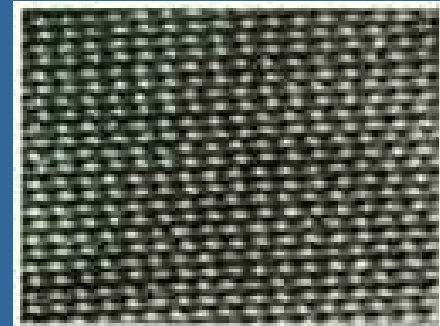
EXPLOSIVES

- ACTUAL EXPLOSIVES
- BOMB MAKING MATERIALS
- RESIDUE



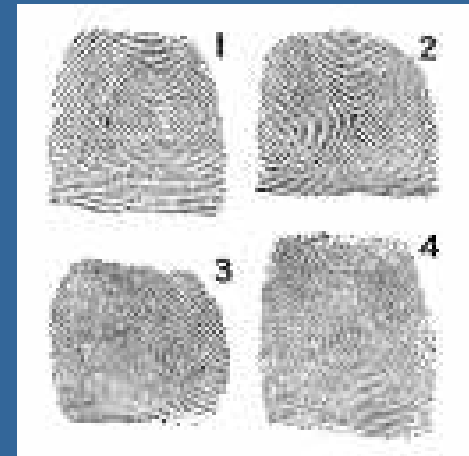
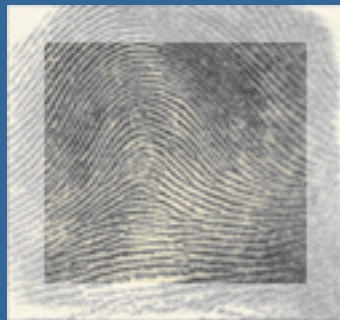
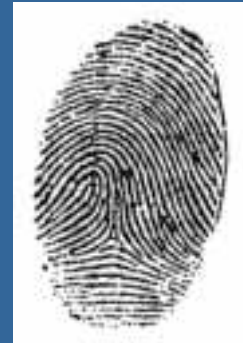
FIBERS

- NATURAL/SYNTHETIC
- LOCATION
- RELATIONSHIPS



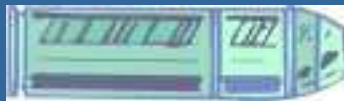
FINGERPRINTS

- VICTIM
- SUSPECTS
- EVIDENCE
- LATENT/VISIBLE/PLASTIC



FIREARMS & AMMUNITION

- GUNS
- NEW AND USED AMMUNITION



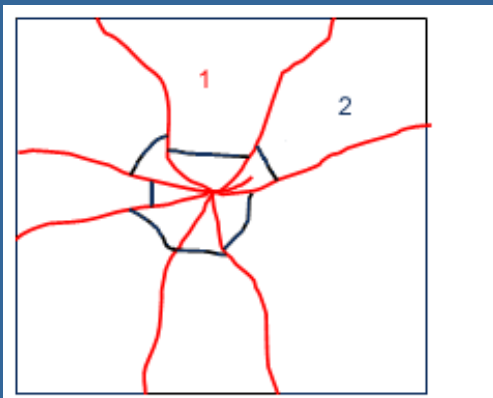


POWDER RESIDUE

- GUNPOWDER RESIDUE
- MATERIALS
- SKIN

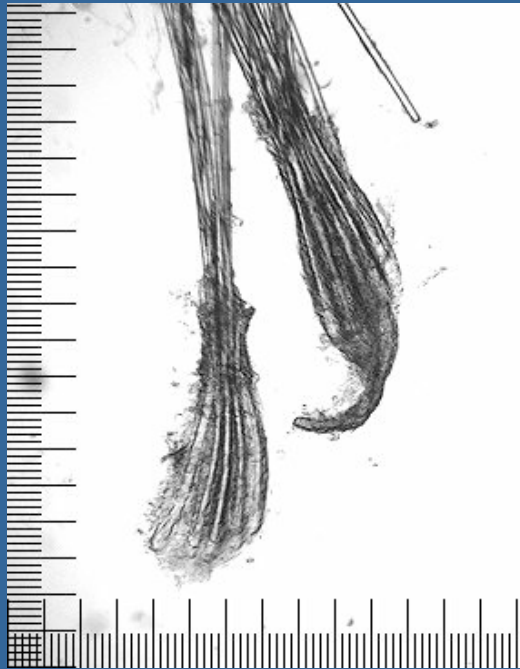
GLASS

- PARTICLES AND FRAGMENTS
- WINDOW PANES
- SHOW RELATIONSHIPS



HAIR

- ANIMAL OR HUMAN
- SHOW RELATIONSHIPS



IMPRESSIONS

- TIRE MARKINGS
- SHOE IMPRESSIONS
- ANY TRACKS
- FABRIC IMPRESSIONS
- BITE MARKS

